

# Summer Newsletter

August 2006

Version 11.42

## Farm Works User In National Press

In the build-up to Cereals 2006, national magazine *Arable Farming* chose Farm Works user Peter White in one of its preview articles focusing on precision farming. On his 2200 acre farm in Newark, Peter has been embracing technology for several years: "We have been perfecting min-tilling techniques for over ten years and have learnt a lot about optimising seed rates in that time. Our main achievement has been reducing seed rates from 250 down to 150 per m<sup>2</sup>", he explains.

Peter points out why he selected Farm Site Mate ahead of a number of market alternatives: "We looked at some satellite images in February 2004 and the first thing we could see was how plant density reflected soil type and wanted to know how we could influence this agronomically."

"We were concerned with getting seed rates right before varying nitrogen accordingly so we bought a Simba Horsch drill with the ability to alter seed rates on the move. It wasn't hard to find the software needed to operate the variable system after AGCO pointed us in the direction of Farm Works."

But with the likelihood of numerous operators on farms reliant on seasonal labour, the true test of the technology is in the field. Drill operator and computer novice Adam Swan adds: "We were originally trying to map with quads but it proved to be very inefficient so we turned to the Farm Works system for a much more effective way of mapping fields. I have never really used a computer before but I now find the Farm Works software very easy to use."

Asked what direct benefits his Farm Works system brings, Peter White replies: "This is the first season we have run with the Farm

Site Mate system and have already seen savings in seed cost of over ten percent. It also removes the temptation to simply put more on when you are in the field."



Pete White and operator Adam Swan on site at Leyfields Farm, Newark

"From this harvest on we will be tailoring techniques around the system and I'm sure there is scope to reduce the seed rate to below 150 per m<sup>2</sup> on our silty clay loams. The next stage will be at harvest 2007 when we plan to kit the combine out with the full yield and mapping package. This can then be transferred on to the sprayer for the rest of the year to take full advantage of the field information generated by the Farm Works software."

Peter has since purchased a Titan RT Guidance Solution for use on Leyfields Farm.

### *Inside this issue:*

Version 12	2
AgriScot 2006	2
Q & A	3
User Stories	3
Training & Support	4
New Dealer	4
Farm Works Worldwide	4



## Farm Works Q & A

As you harvest this summer, are you missing a place to include yield information in your harvest information box? The properties on your harvester are most likely set up incorrectly. Read on for a quick fix!

The **Harvest Information** area of the Farming box is where you will enter the yield data of the field. Yield information can be entered manually, entered with the Harvest Calculator, or by entering Scale Tickets from the elevator.

Harvest Information	
Yield/Acre (bushels)	120.00
Total Harvest (bushels)	3664.00
Harvest Calculator	Harvest Calc.
Scale Tickets	Scale Tickets
Destination	J Presley

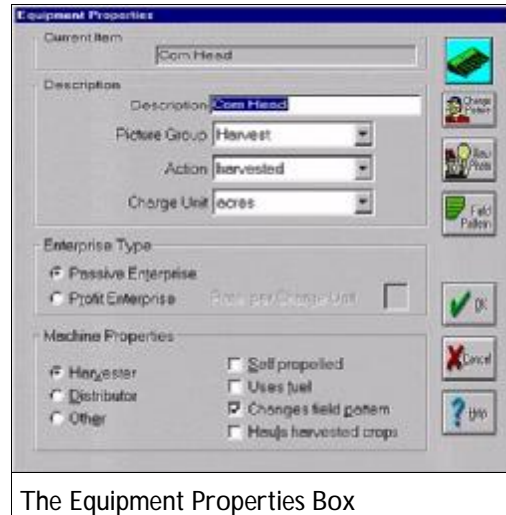
The Harvest Information Box

This information will be used in your notations and, if you have Farm Funds, the total harvest or farm input share value will be added to the harvest inventory.

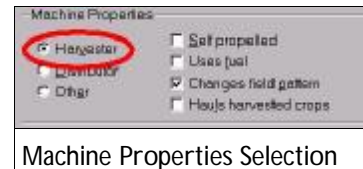
If the **Harvest Information** area of the Farming box is missing, check the properties of your equipment. One of the pieces of equipment being used for harvest needs to be selected as a Harvester in the Machine Properties (typically the combine or the combine head).

1. Go to the equipment tab on the left side of the screen, open the correct picture group and right click on the equipment name or icon being used for the harvest operation.
2. Select Properties from the right-click menu.

**Equipment Properties** window will be displayed.



Make sure **Harvester** is selected beneath the **Machine Properties** area for this piece of equipment.



4. Click **OK**.
5. Continue recording farming operations.

## Grass Is Always Greener With Farm Works

Scottish farmer and Farm Works user Tommy Clark recently appeared in The Scottish Farmer publication, demonstrating the benefits of using his Farm Works software in conjunction with a Crop Circle canopy sensor.

For his 350 ha Kelso farm Tommy sourced his Crop Circle and Site Mate VRA from Brechin based Soil Essentials, in order to combine it with his yield monitor and existing Farm Works software. He first encountered the idea of yield mapping at university and, five years ago, bought a second-hand yield monitor.

Crop Circle uses a light source to map green

areas in fields, giving the ability to vary nitrogen application accordingly.

"We did have a very level crop of winter barley and the areas where we cut back nitrogen have still yielded just as high as before", Tommy explained. "We're using the same amount of fertiliser, but just re-distributing it to get as much out of it as possible."

He estimates his system additions cost about 3% of his nitrogen fertiliser bill over five years. In the long run, Tommy hopes to gain a £20 p/ha benefit.

For more details, log on to [www.cropcircle.eu.com](http://www.cropcircle.eu.com)



HP iPAQ loaded with Site Mate VRA



The Crop Circle canopy sensor

Farm Works Ltd.

5 Enterprise House  
Springkerse Business Park  
Stirling  
FK7 7UF

Phone: 01786 465 100

Fax: 01786 465 611

Email: [info@farmworks.co.uk](mailto:info@farmworks.co.uk)  
[ian@farmworks.co.uk](mailto:ian@farmworks.co.uk)  
[fiona@farmworks.co.uk](mailto:fiona@farmworks.co.uk)  
[phil@farmworks.co.uk](mailto:phil@farmworks.co.uk)

We're on the web!  
[www.farmworks.co.uk](http://www.farmworks.co.uk)

*Integrated Farm  
Management Solutions*



***Sign up for our yearly support plan and receive unlimited telephone, broadband internet and email support. At £120 for one year\*, it's the perfect way to cover all your Farm Works product queries!***

***\*New customers 1st year free***

***For a limited time only, any upgrades to or purchases of Variable Rate Application systems will come with a free SD Card Reader - no need to worry about synchronising files!***

## New Farm Works Dealer

### THE COURTYARD PARTNERSHIP

Farm Works would like to welcome The Courtyard Partnership into our network of software and hardware distributors.

20 years, The Courtyard Partnership are looking to the future by incorporating precision farming techniques with their services.

An independent Wiltshire-based family agronomy business for over 20 years. Find out more at [www.courtyard-partnership.co.uk](http://www.courtyard-partnership.co.uk)

## Farm Works Worldwide



Farm Works Site Mate VRA Solution connected to the Rauch Quantron I

In conjunction with our local distributor, MJM Litovel, a Farm Works Site Mate VRA Solution was recently installed on the largest farm in the **Czech Republic**, to run on a 36 metre Rauch pneumatic spreader.

This was Farm Works' first experience of an integrated solution that communicates with a CAN BUS system, with the control device being the less common Quantron I controller.

This particular model requires a serial-CAN converter cable. This can be a cost-effective solution for data transfer between devices with serial interfaces in CAN BUS, ISO-BUS/LBS and vice versa systems.

Once installed the system proved invaluable for variable rate application based on NDVI imagery, which had been collected from aerial imagery.

Continuing the theme of variable rate application in foreign agriculture, Farm Works has recently sold a Site Mate VRA Solution to Sargent Agricola in **Chile**.

Sargent are one of the largest companies in Chile. They supply both the agricultural and industrial markets with components, equipment and system integration services

Freephone Sales Telephone Number

0800 856 60 30